



National Trust

Middlethorpe Hall

Escape to the Country

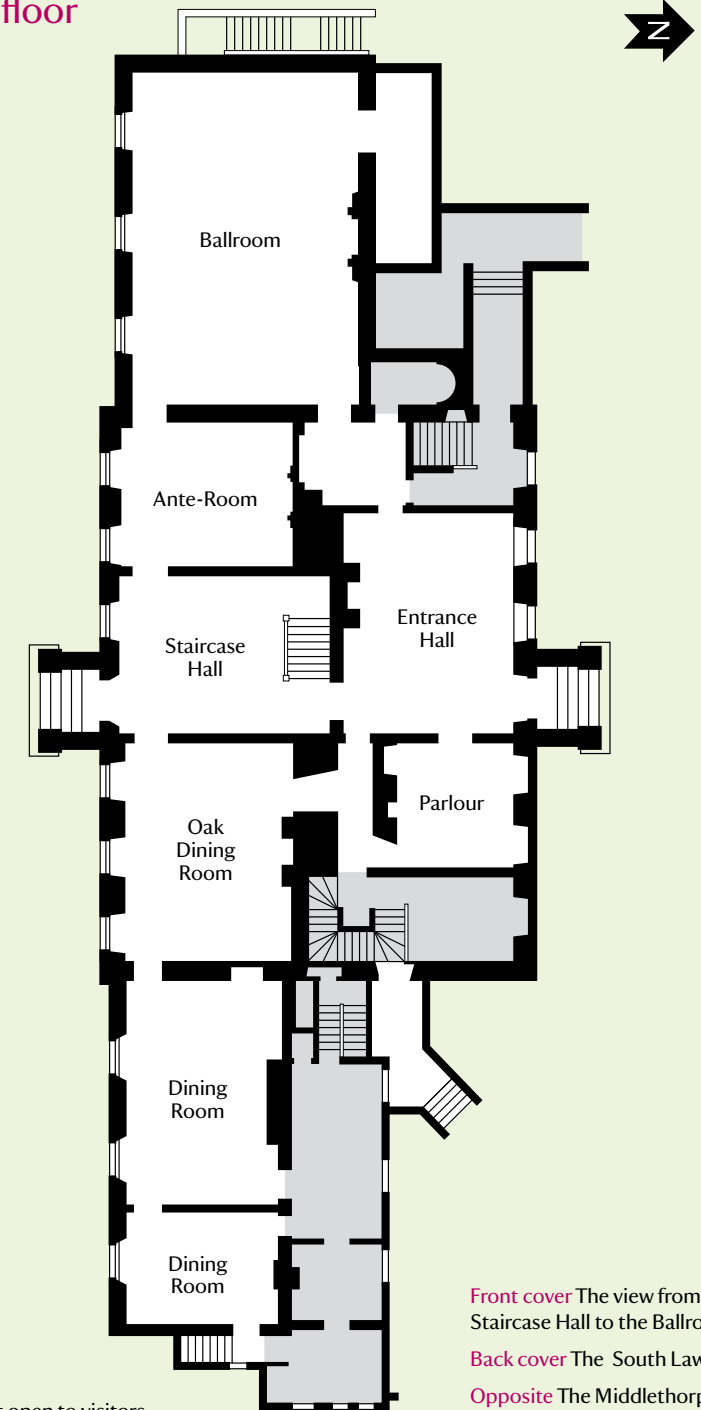
Thomas Barlow built Middlethorpe Hall so that he could enjoy all the comforts of eighteenth-century country life. 300 years later, you still can, together with every mod con.

www.middlethorpe.com



www.nationaltrust.org.uk

Ground floor



Front cover The view from the Staircase Hall to the Ballroom

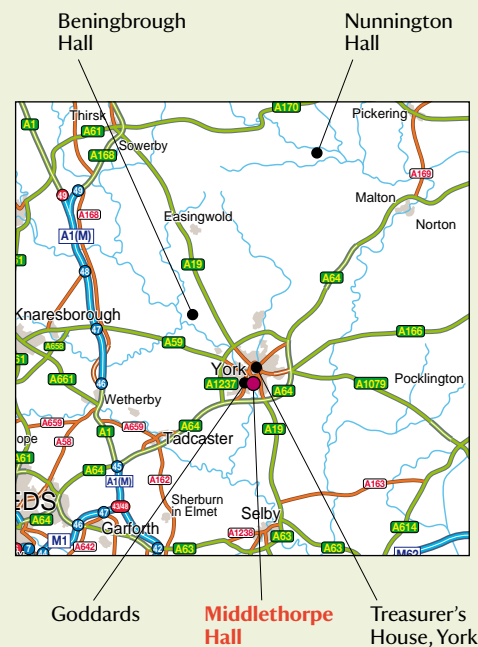
Back cover The South Lawn

Opposite The Middlethorpe door knocker

Areas not open to visitors

Key

- | | |
|-----------------------|---------------------|
| 1 House | 14 Rose Garden |
| 2 Beech Avenue | 15 Dovecot |
| 3 Car-park | 16 Walled Garden |
| 4 Spa | 17 White Walk |
| 5 Meadow | 18 Northern Red Oak |
| 6 Cottage Suites | 19 Yew Walk |
| 7 Middlethorpe Court | 20 English Oak |
| 8 Classical Courtyard | 21 Sunken Fence |
| 9 Turkey Oak | 22 Wild Flower Walk |
| 10 Wall Walk | 23 Cedar of Lebanon |
| 11 South Lawn | 24 Park |
| 12 Deodar Cedar | 25 Lake |
| 13 Ha-Ha | |



↑
A64 Leeds
A1(M)



A64
Scarborough
↓

Acknowledgements

This guide is heavily indebted to the report written by Historic Buildings Consultants in 1990. I am also very grateful to Richard Broyd for his help in many ways and to Lionel Chatard and his team at Middlethorpe Hall. Elizabeth Crawford provided the portrait of Fanny Wilkinson.

Oliver Garnett

Bibliography

BARLOW, Montague, *Barlow Family Records and Supplement*, privately printed, 1932.

BINNEY, Marcus, 'Middlethorpe Hall', *Country Life*, vol. 202, no. 18, 1 May 2008, p. 111.

FULTON, Moira, and Helen Lazenby, 'The gardens at Middlethorpe Hall, York: history and restoration', *Garden History*, vol. 34, no. 1, summer 2006, pp. 112–31.

CRAWFORD, Elizabeth, 'Wilkinson, Fanny Rollo', *ODNB online*.

HALL, Ivan ed., *Samuel Buck's Yorkshire Sketchbook*, Wakefield Historical Publications, 1979, p.43 [facsimile of Lansdowne MS 914 in the British Library].

WORSLEY, Giles, 'Middlethorpe Hall, Yorkshire', *Country Life*, vol. 178, no. 4608, 12 December 1985, pp. 1894–9.

Illustrations

British Library, Lansdowne MS 914, p.9 (bottom); London Library p.3 (bottom); Middlethorpe archive pp.7, 11 (top right); National Trust Images/James Dobson front cover, pp.1, 5, 6, 10–11, 13, 15 (bottom right), 16; National Trust Images/Chris Lacey pp.2, 3 (top), 8, 9 (top), 12, 14 (top and bottom), back cover; National Trust Images p.4; *Women's Penny Magazine*, 8 November 1890, p.15 (top); York Museums Trust p.15 (bottom left).

Historic House Hotels

Treat yourself to a break at Middlethorpe Hall Hotel, Restaurant and Spa in York (telephone 01904 641 241; www.middlethorpe.com)

Hartwell House Hotel, Restaurant and Spa (telephone 01296 747 444; www.hartwell-house.com), and

Bodysgallen Hall Hotel, Restaurant and Spa in North Wales (01492 584 466; www.bodysgallen.com).

The National Trust

is a registered charity

is independent of government

was founded in 1895 to preserve places of historic interest or natural beauty permanently for the benefit of the nation

protects and opens to the public over 350 historic houses, gardens and parks, ancient monuments and nature reserves

owns almost 250,000 hectares (618,000 acres) of the most beautiful countryside and almost 750 miles of outstanding coastline for people to enjoy

relies on the generosity of its supporters through membership subscriptions, gifts, legacies and the contribution of many tens of thousands of volunteers.

If you would like to become a member or make a donation, please telephone 0344 800 1895 (minicom 0344 800 4410); write to National Trust, PO Box 574, Rotherham S63 3FH; or visit our website at www.nationaltrust.org.uk

The moral right of the author has been asserted. All rights reserved. No part of this publication may be reproduced, stored in a retrieval system, or transmitted in any form or by any means, without the prior permission in writing of the publisher, nor be otherwise circulated in any form of binding or cover other than that in which it is published and without a similar condition including this condition being imposed on the subsequent purchaser. A CIP catalogue record for this book is available from the British Library.

Why not stay in a National Trust holiday cottage and explore other sites in the area? Call 0344 800 2070, or visit www.nationaltrustcottages.co.uk

© 2015 The National Trust

Registered charity no. 205846

ISBN 978-1-84359-480-2

Text by Oliver Garnett

Garden plan by Neil Gower

Designed by Blacker Design

Printed by Park Lane Press, Corsham for National Trust (Enterprises) Ltd, Heelis, Kemble Drive, Swindon, Wilts SN2 2NA on Cocoon Silk made from 100% recycled paper

High-quality prints from the extensive and unique collections of National Trust Images are available at www.ntprints.com